

**SONOREX TECHNIK**  
**RM 110 - Module series**

High-power ultrasonic baths and rinsing baths  
for aqueous fluids

- RM 110 UH: Ultrasonic bath with heating
- RM 110 U: Ultrasonic bath without heating
- RM 110 H: Rinsing bath with heating, without ultrasound
- RM 110: Rinsing bath without heating, without ultrasound



RM 110 UH

	RM 110 UH	RM 110 U	RM 110 H	RM 110
Code No.	8230 - 40 kHz 8240 - 25 kHz	8231 - 40 kHz 8241 - 25 kHz	8232	8233
<b>Oscillating tank / rinsing tank</b>				
Internal dimensions, l x w x d	600 x 450 x 450 mm			
Filling level mark from the tank bottom Upper edge overflow gutter from the tank bottom	350 mm 405 mm			
Tank edges	rectangular form			
Capacity	135 l			
Operating volume up to filling level mark	110 l			
Filling volume to overflow gutter	125 l			
Tank material	stainless steel AISI 316L, 2 mm, welded			
Outlet / Inlet	3-way ball valve G 1 incl. hose and hose sockets, on the left side; brass, galvanically coated			
Overflow, tightly welded	ball valve G 1 incl. hose socket, on the right side; brass, galvanically coated			
Overflow gutter	on the right side			
Sprinkle tube	on the left side			
Tank bottom	straight			

	RM 110 UH	RM 110 U	RM 110 H	RM 110
--	-----------	----------	----------	--------

<b>Ultrasound</b>				
Ultrasonic peak power corresponds to 4 times ultrasonic nominal power	4000 W		-	
Ultrasonic nominal power	1000 W		-	
Ultrasonic frequency	40 kHz or 25 kHz		-	
Pulse function	✓		-	
Oscillating systems	20 pieces at tank bottom		-	
Control	turning knob			-
Time setting	1 – 15 min and continuous operation		-	

<b>Temperature control</b>				
Adjustable temperature range	30 – 80 °C	-	30 – 80 °C	-
Heating power	4800 W	-	4800 W	-

<b>Housing</b>				
External dimensions, l × w × h	780 × 550 × 800 mm			
Housing material	stainless steel AISI 304			
Handles	on the sides			
Degree of protection	IP 32			
Feet	4 height adjustable feet			

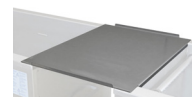
<b>Power supply</b>				
Mains supply	400 V 3N~ (± 10 %), 50/60 Hz			
Power consumption	5.8 kW	1.0 kW	4.8 kW	-
Current consumption per phase	max. 10.5 A	max. 4.4 A	max. 10.5 A	-
Leakage current	< 3.5 mA	< 3.5 mA	< 3.5 mA	-
Mains cable	3 m, fixed at the unit, with three-phase plug CEKON 16 A			-

<b>Environmental conditions</b>				
Permissible ambient temperature	5 – 40 °C			
Permissible relative humidity to 31 degree	80 %			
Permissible relative humidity to 40 degree	50 %			

<b>Shipping information</b>				
Weight	net			
	gross	72 kg	67 kg	60 kg
		94 kg	92 kg	81 kg
				55 kg
				76 kg
Packing, l × w × h	1 special pallet 1100 × 750 × 1100 mm			

**Accessories**

Type	Code No.	Description
MK 110	8423	insert basket, stainless steel load up to 20 kg internal dimensions 530 x 410 x 90 mm, l x w x d mesh size 12.5 x 12.5 mm
MK 110 S	8476	insert basket, stainless steel load up to 40 kg internal dimensions 530 x 410 x 90 mm, l x w x d mesh size 12.5 x 12.5 mm
MK 110 B	8417	insert basket, stainless steel, applicable for lifting device MB load up to 20 kg internal dimensions 530 x 410 x 90 mm, l x w x d mesh size 12.5 x 12.5 mm
MK 110 BS	8481	insert basket, stainless steel, applicable for lifting device MB load up to 40 kg internal dimensions 530 x 410 x 90 mm, l x w x d mesh size 12.5 x 12.5 mm
MD 110	8446	lid, stainless steel
TB 110	8403	drop plate, stainless steel, between two tanks if using a MB

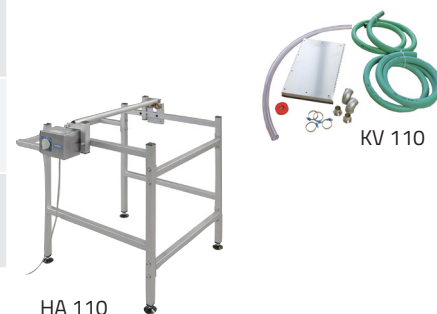


**Supplementary equipment**

WG 110-2	8520	rack for 2 tanks, in connection with MB 110 B
WG 110-3	8521	rack for 3 tanks, in connection with MB 110 B
WG 110-4	8522	rack for 4 tanks, in connection with MB 110 B
MB 110	8310	lifting device with oscillation, for one unit
MB 110 B	8314	lifting device with oscillation, in connection with WG 110
KV 110	8453	cascade tube between two tanks
HA 110	8496	planing head holder, stainless steel



MB 110 B with WG 110-2



HA 110

Peripheral units

Type	Code No.	Description
FA 110	8611	filtration with pre- and fine filter incl. connection kit
OX 110	8603A	oil separator incl. connection kit
WA 110	8635A	DI-water-preparation device incl. connection kit
TO 110	8337	trough dryer, internal dimensions 600 × 500 × 350 mm, l×w×d



Caution!  
Do not use combustible liquids, acids, chemicals containing chloride ions and household cleaners.  
Do not place items on the tank bottom.  
Recommendation: Special cleaning agents TICKOPUR

Subject to technical alterations without notice. Dimensions subject to production tolerances.  
Illustrations exemplary, not true to scale. Decoration products are not included in delivery.